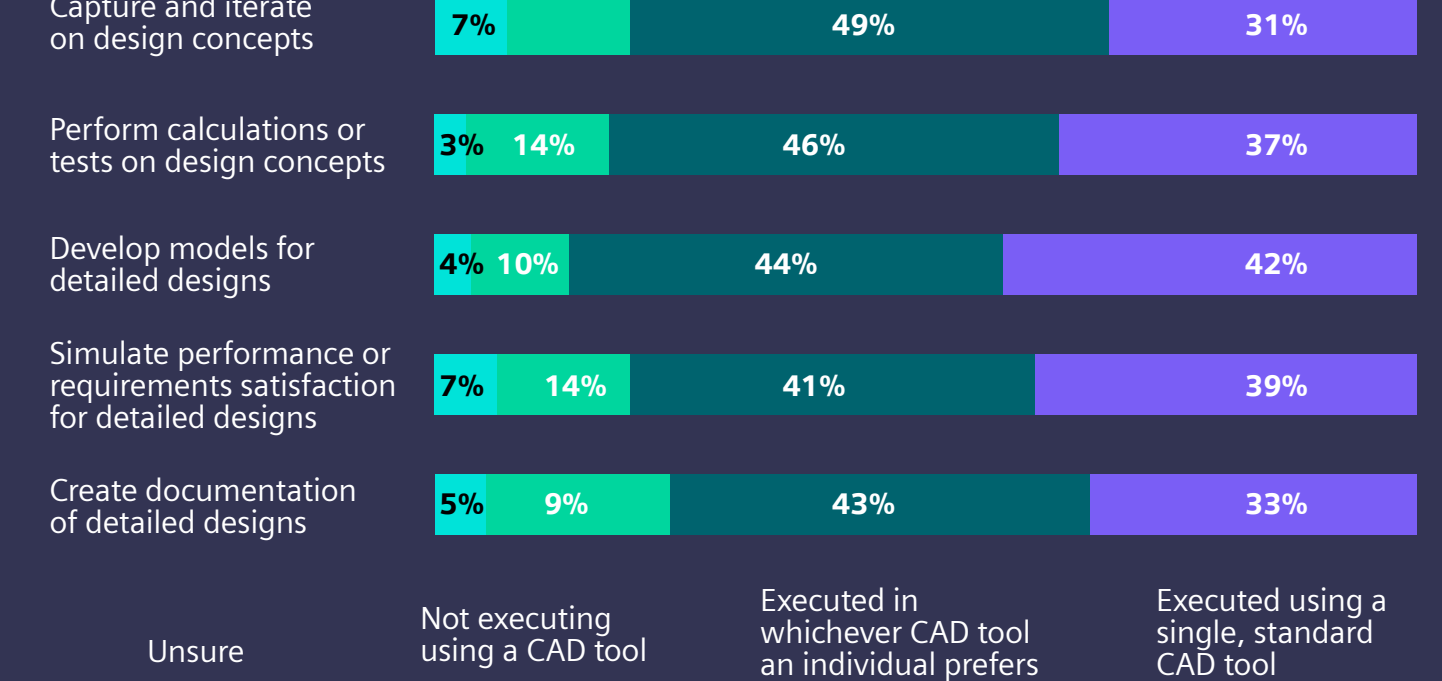


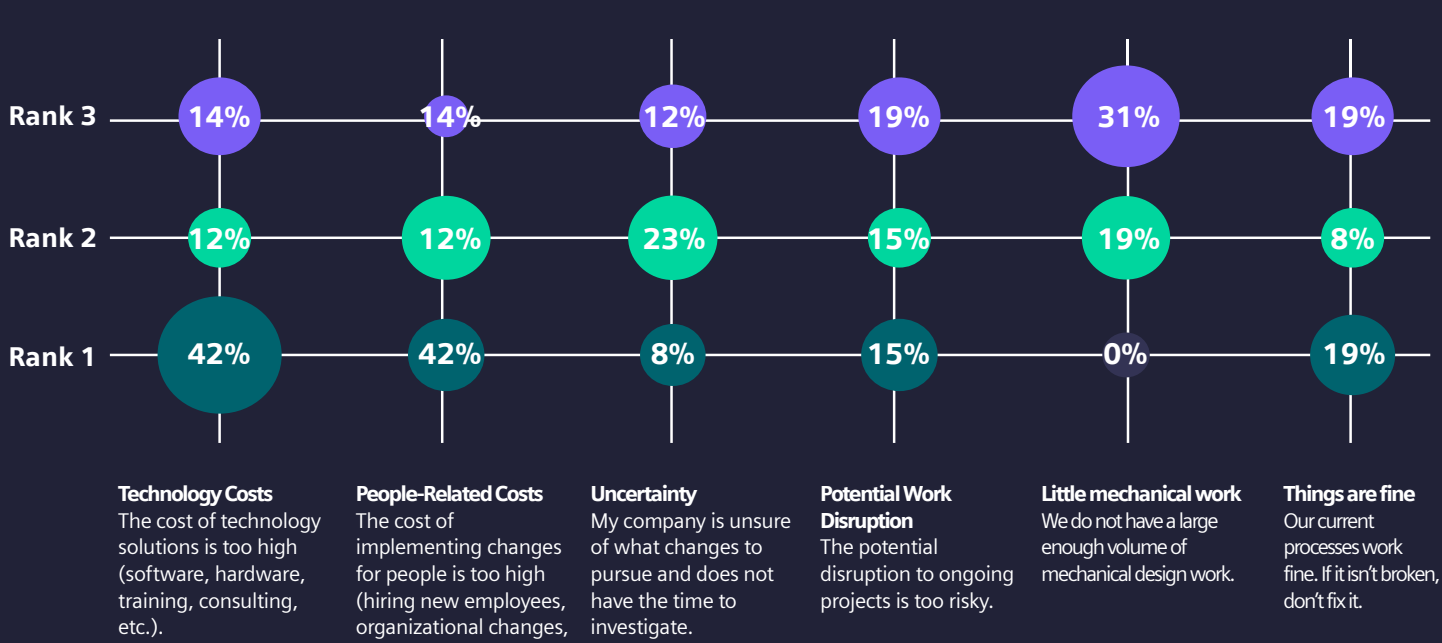
Boost collaboration with an integrated product lifecycle management solution

Business trends

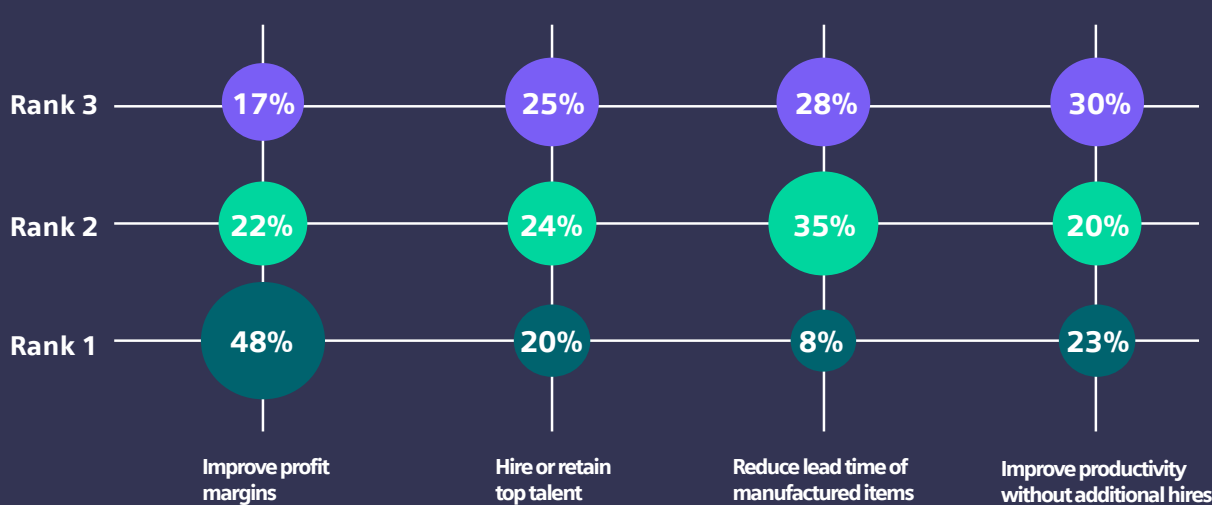
Small and medium businesses still rely on a variety of tools and technologies to execute mechanical design



When considering improving mechanical design, cost is a top concern. We asked, which of the following most affects your company's outlook on improving mechanical design?

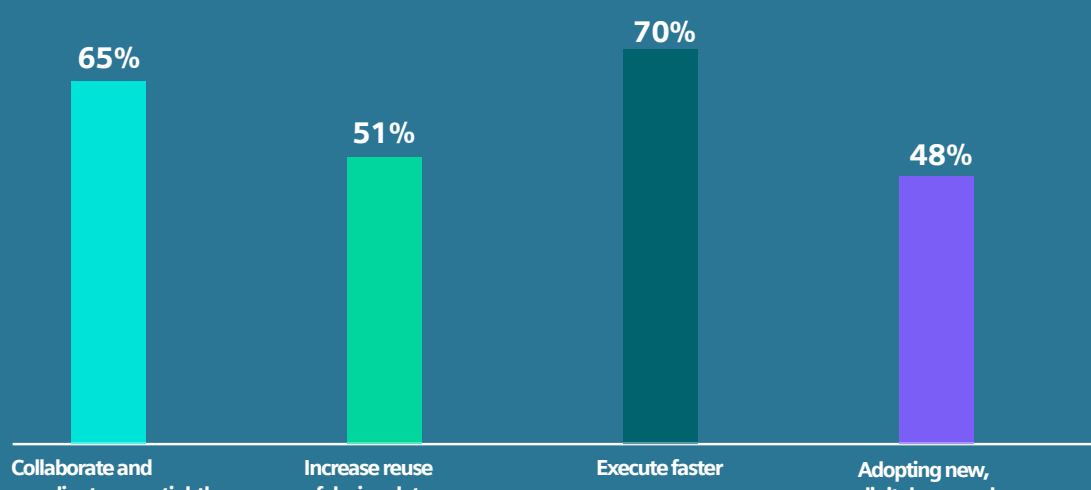


A major driver for adopting new tools and technologies is to improve profit margins



Collaboration and speed are key to success

Which of the following methods is most important to improving productivity without additional hires?

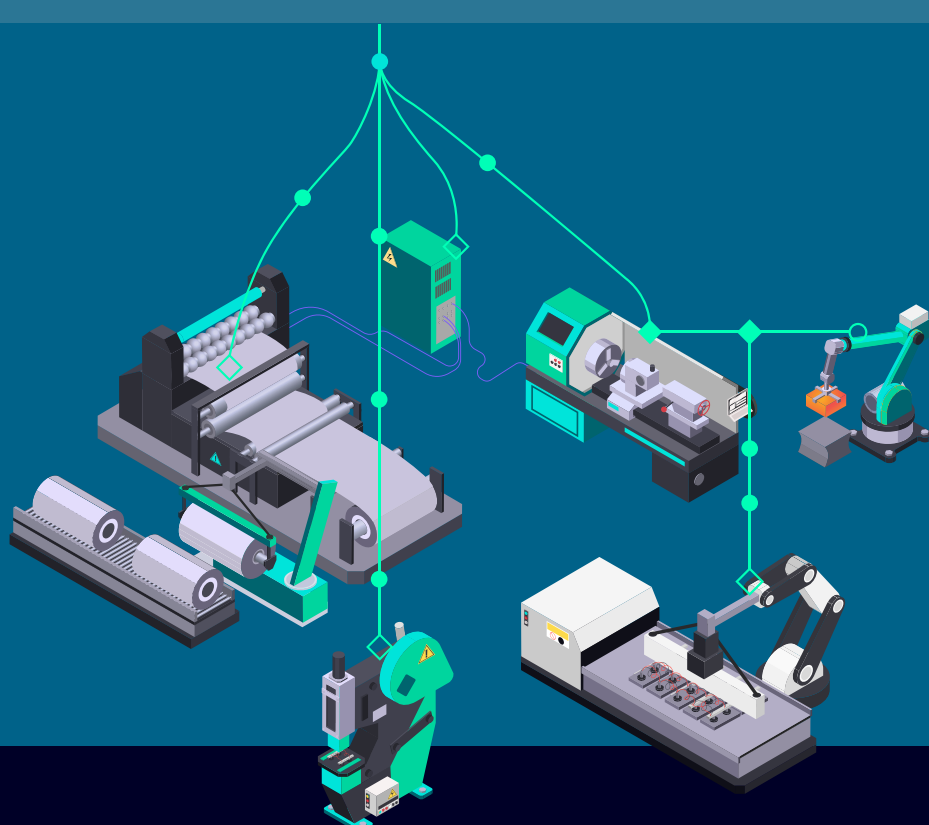


However



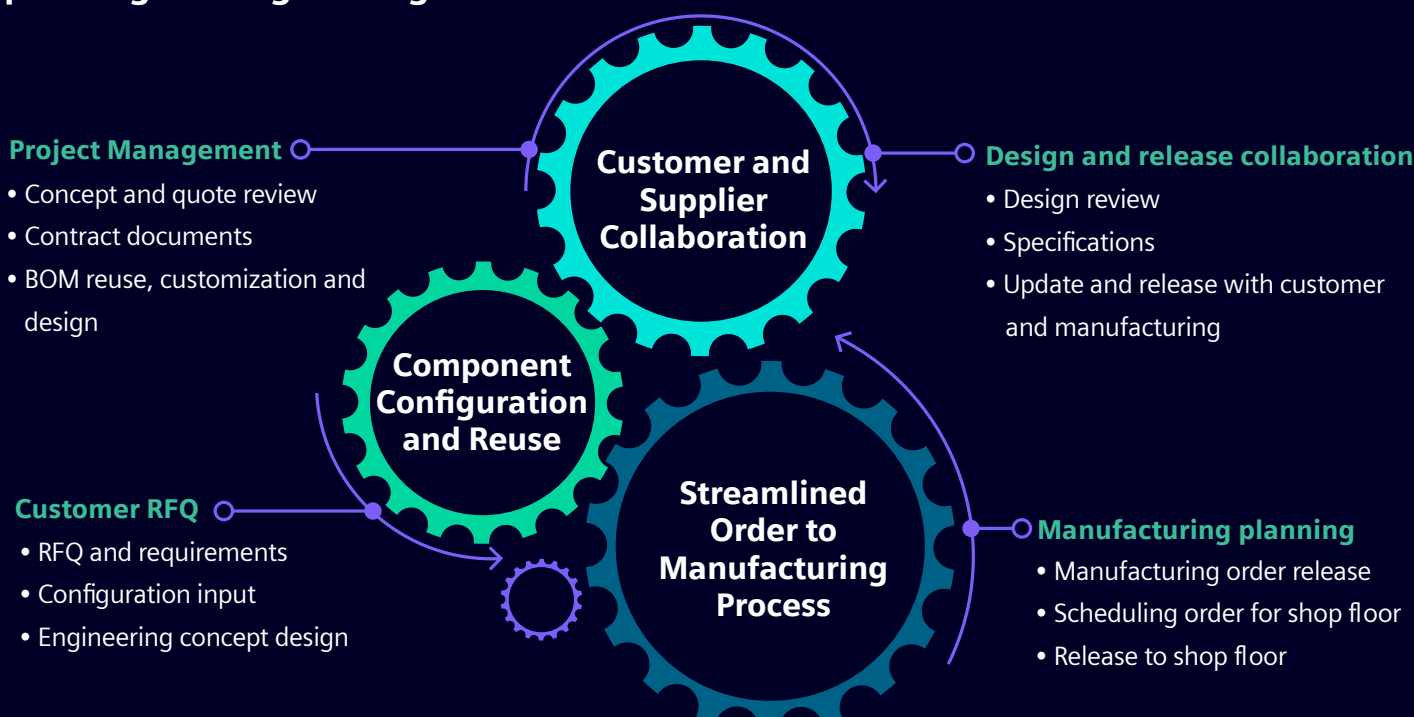
Companies have long struggled to break down silos and boost cross-functional collaboration – but the challenge is getting more acute.”

Source: McKinsey & Company



The solution

PLM for Component Manufacturers meets the user where they are at in their digital journey helping to move orders from RFQ to manufacturing planning and engineering release faster than ever.



Start with PLM for Component Manufacturers...

- Get up and running with built-in industry best practices
- Easy to use, easy to access with AI-supported usability
- Scale up, scale down to meet your needs with cloud flexibility



...and grow as your business grows/needs

- Grow your **capability** - take advantage of any PLM capability
- Grow your **users** - scale up, scale down as needed
- Grow your **footprint** - quickly connect teams across the globe

What's next?

Discover more of integrated product lifecycle management solution

Explore more

